

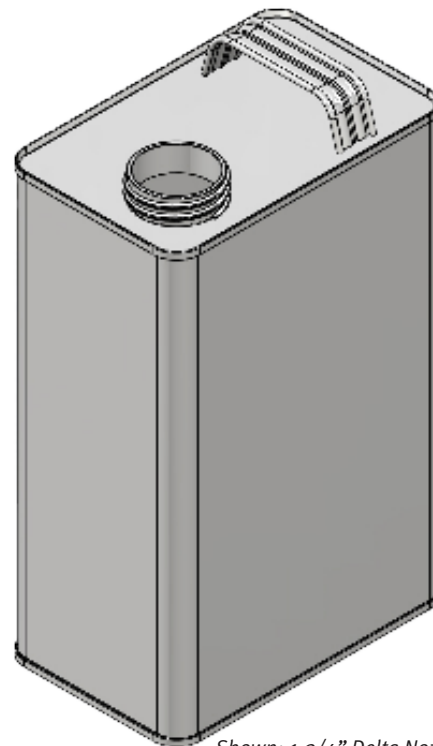
# F-Style Metal Cans

## 1 Gallon Configurations

Pipeline's 1 Gallon F-Style Metal Cans offers multiple advantages for a secure durable storage package. These cans are crafted from tin-plate steel, making them exceptionally resistant to rust and suitable for containing aggressive chemicals, solvents, lubricants, and other industrial liquids. The 1 Gallon size provides ample storage capacity while the convenient rectangular shape maximizes storage efficiency and allows for easy stacking, reducing space requirements and improving shipping economy.

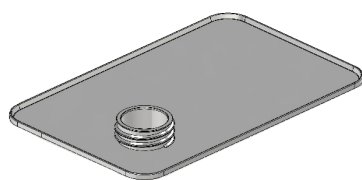
### PRODUCT FEATURES

Dimensions	610 x 403 x 907 6.64" x 4.15" x 9.4375"
Linings	Unlined, Epoxy, Phenolic
Exterior Colors	Tin, White, (Custom)
Metal Nozzles	1-1/8" to 2-7/8"
Piercings (REL)	23 mm, 32mm, 42mm, 57mm
Handles	Metal Bridge, Plastic Flip
Customizable Lithography	
UN-Certified Packages	

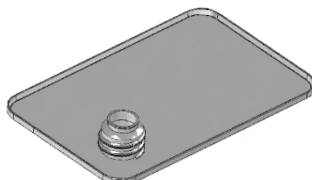


Shown: 1-3/4" Delta Nozzle

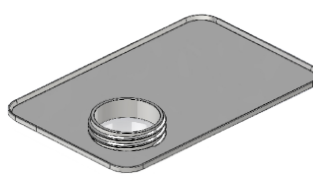
### NOZZLES AND PIERCINGS (REL)



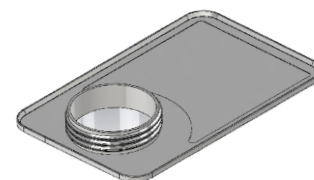
1-1/4" Alpha Nozzle



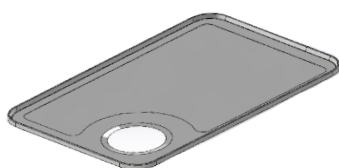
1-1/8" Beta Nozzle



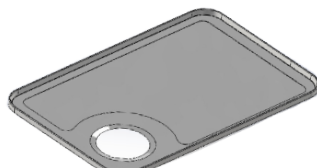
1-3/4" Delta Nozzle



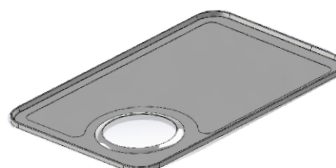
2.875" Nozzle



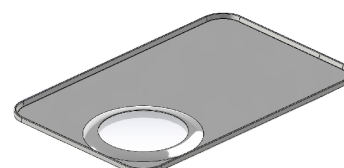
23mm Rel



32mm Rel



42mm Rel



57mm Rel